



Never Let Me Go

Kazuo Ishiguro

Advanced English Literature (3.2)

David Marler - Rotterdam UAS

Workshop Goals

Never Let Me Go

The student demonstrates knowledge of and insight into the defining characteristics of *Never Let Me Go* and can analyze the text to determine its genre.

The student has a knowledge of the characteristics of the various genres (see reader) and can discuss dystopias and science fiction.

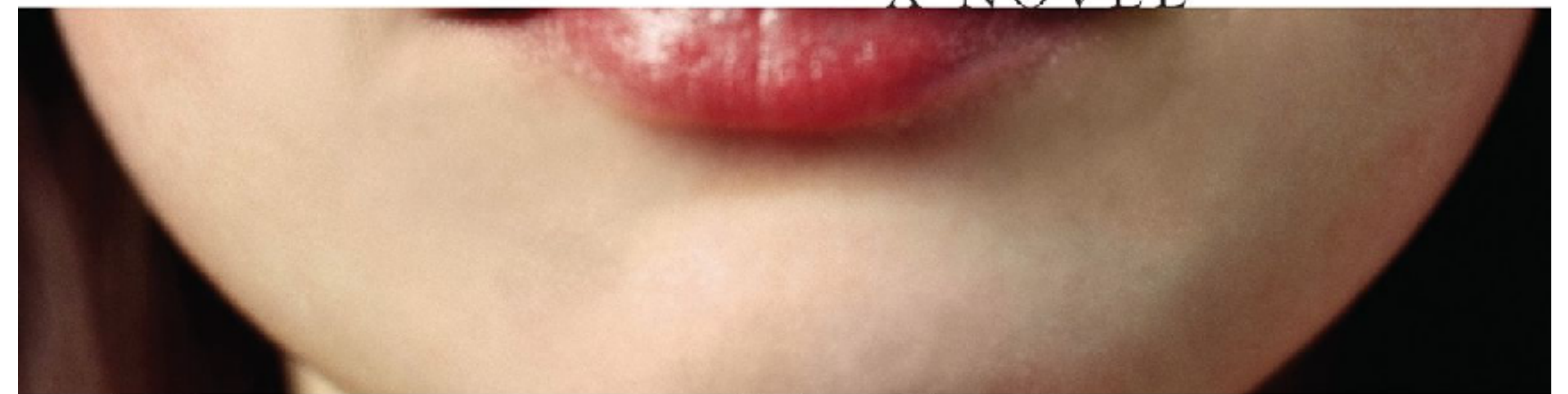
The student can use arguments and counterarguments in their essay and strengthen these arguments with evidence from their texts. (Online/ on Moodle)



Never Let Me

Go

A NOVEL



Kazuo Ishiguro

Workshop Activities

Never Let Me Go

Activity 1

Focussing on Setting (20")

Activity 2

Class discussion (20")

Activity 3

To which genre does NLMG belong? (20")

Activity 4

Mini-presentations on genre (20")

Activity 5

Reader-response criticism (20")



Never Let Me



Go

A NOVEL



Kazuo Ishiguro



Activity 1

Focussing on setting

- You will be split into 5 groups. Each group will get a place in the novel and you will discuss the following task and come to a conclusive answer that you will share after your **10 minutes** of discussion is up. The task is:

Describe what the place looks like, and state the importance of this place in the novel to the various characters.

1. Hailsham

2. The Cottages

3. Trip to Norfolk

4. Tommy's Recovery Centre (Kingsfield Recovery Centre)

5. Madame Marie-Claud's house

Workshop Activities

Never Let Me Go

~~Activity 1~~

~~Focussing on Setting (20")~~

Activity 2

Class discussion (20")

Activity 3

To which genre does NLMG belong? (20")

Activity 4

Mini-presentations on genre (20")

Activity 5

Reader-response criticism (20")

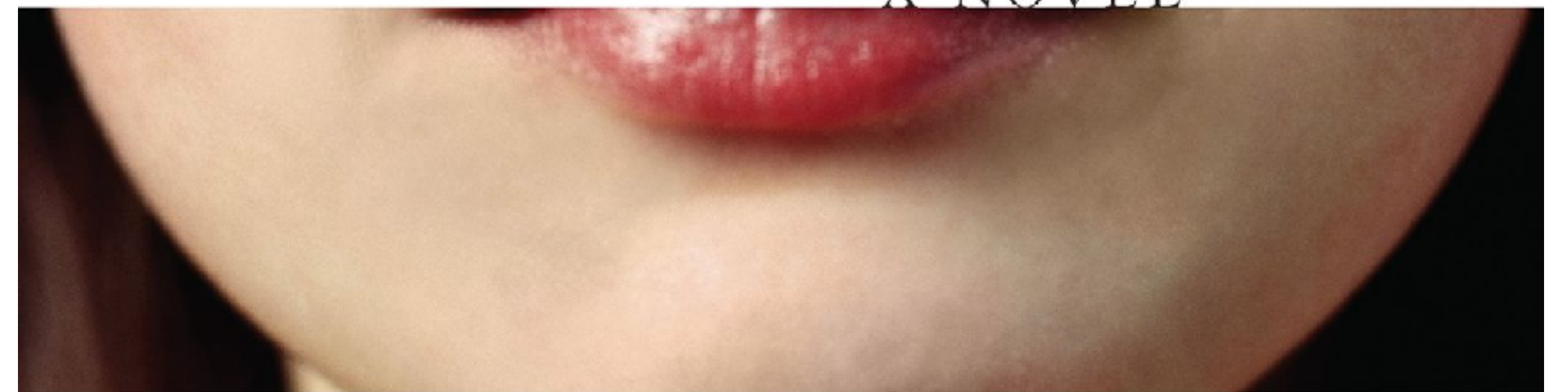


Never Let Me



Go

A NOVEL



Kazuo Ishiguro

We know from the text that Hailsham was one of the best places in the novel. What do you think that the caretakers (and Madame) were trying to do with their kinder approach at Hailsham? Why did they have them focus on creating art?

Why do you think that characters in the novel never revolted, ran away, or refused to become donors?

How does Tommy change throughout the novel? Why does he continue to draw animals even when he leaves Hailsham?

How did the non-clone characters react towards the clones in the novel? What were their feelings towards the clones? Why do you think they acted that way?

Workshop Activities

Never Let Me Go

~~Activity 1~~

~~Focussing on Setting (20")~~

~~Activity 2~~

~~Class discussion (20")~~

Activity 3

To which genre does NLMG belong? (20")

Activity 4

Mini-presentations on genre (20")

Activity 5

Reader-response criticism (20")



Never Let Me

Go

A NOVEL



Kazuo Ishiguro

Kazuo Ishiguro

Nobel Laureate

- Sir Kazuo Ishiguro (British)
- Born 1954 Japan
- Moved to UK at age 5
- Set his first two novels in Japan, but admits he knows very little of Japan or Japanese fiction. His oeuvre is very English.
- Nobel Prize for Literature (2017)
- Wrote *Never Let Me Go* in 2005



**Which genre does *NLMG*
belong to?**

Dystopian Fiction

definition

“Dystopian literature is a form of speculative fiction that began as a response to utopian literature. A dystopia is an imagined community or society that is dehumanizing and frightening. A dystopia is an antonym of a utopia, which is a perfect society.” ([source: Writing Masterclass](#)).



Dystopian Fiction

common themes

1. government control
2. environmental destruction
3. technological control
4. survival
5. loss of individualism (Source: Margaret Atwood)



Science Fiction

Definition

"Science fiction is a time-sensitive subject in literature. Usually futuristic, science fiction speculates about alternative ways of life made possible by technological change, and hence has sometimes been called "speculative fiction." Like fantasy, and often associated with it, science fiction envisions alternative worlds with believably consistent rules and structures, set apart somehow from the ordinary or familiar world of our time and place. Distinct from fantasy, however, science fiction reflects on technology to consider how it might transform the conditions of our existence and change what it means to be human. "Sci Fi" is the genre that considers what strange new beings we might become-what mechanical forms we might invent for our bodies, what networks and systems might nourish or tap our life energies, and what machine shells might contain our souls." ([source: Dr. Beshero-Bondar](#))



Science Fiction

common themes

1. aliens
2. future science
3. the end of humans
4. artificial intelligence
5. science and its effects
6. technology

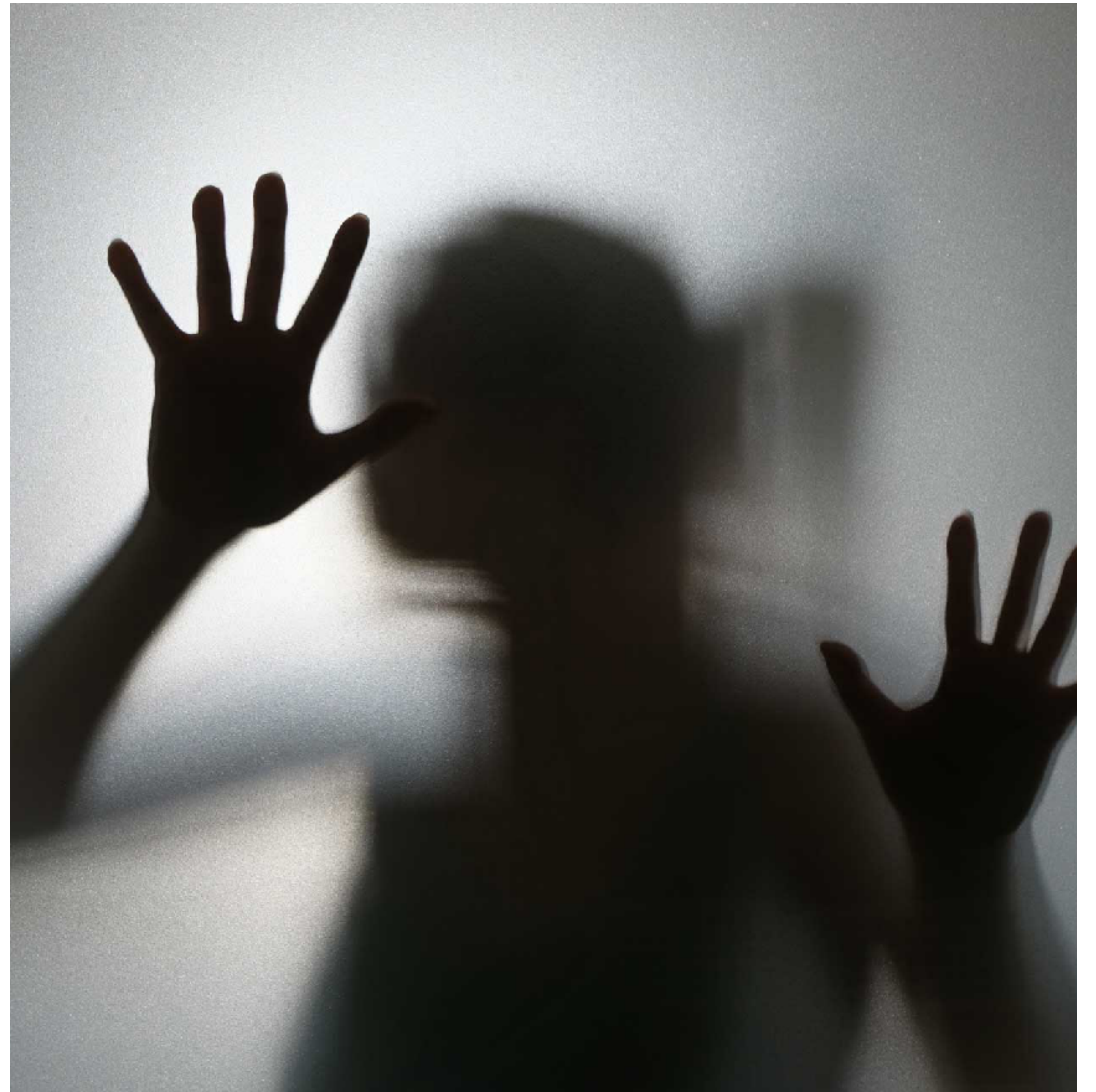


Horror

definition

“Horror is a genre of literature, film, and television that is meant to scare, startle, shock, and even repulse audiences. The key focus of a horror novel, horror film, or horror TV show is to elicit a sense of dread in the reader through frightening images, themes, and situations. In the horror genre, story and characters are just as important as mood and atmosphere. A horror story often shocks and provokes with its exploration of the unknown.”

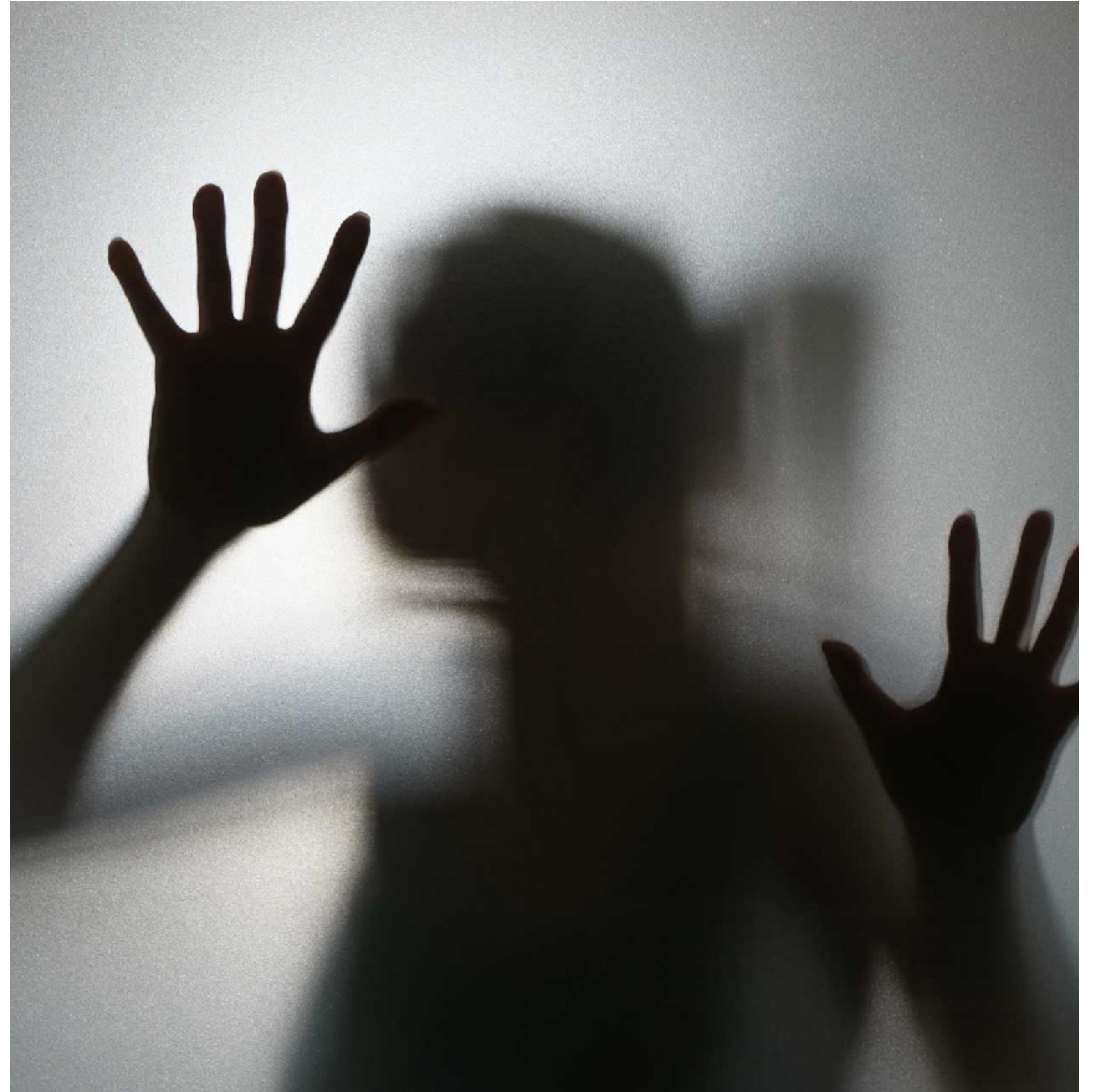
([source: Masterclass](#))



Horror

common themes

1. death
2. the paranormal
3. the occult
4. dark fantasies
5. survivalism
6. science



Workshop Activities

Never Let Me Go

~~Activity 1~~

~~Focussing on Setting (20")~~

~~Activity 2~~

~~Class discussion (20")~~

~~Activity 3~~

~~To which genre does NLMG belong? (20")~~

~~Activity 4~~

~~Mini-presentations on genre (20")~~

~~Activity 5~~

~~Reader-response criticism (20")~~



Never Let Me

Go

A NOVEL



Kazuo Ishiguro

Activity 4

Mini-presentations on genre (10" in groups, 10" presentations)

- You will be split up into 3 (or 6) groups.
- Each group will be given a genre (Dystopian, Sci-Fi, or Horror).
- You will have 10 minutes to come up with 3 instances from the novel that prove it is part of your group's literary genre.
- After 10 minutes, you will present to the group.
- Group 1 (and 4): Dystopian fiction
- Group 2 (and 5): Science fiction
- Group 3 (and 6): Horror
- Make sure to choose one person in your group to present (this person must not have shared already in class today!)

Workshop Activities

Never Let Me Go

~~Activity 1~~

~~Focussing on Setting (20")~~

~~Activity 2~~

~~Class discussion (20")~~

~~Activity 3~~

~~To which genre does NLMG belong? (20")~~

~~Activity 4~~

~~Mini-presentations on genre (20")~~

~~Activity 5~~

~~Reader-response criticism (20")~~



Never Let Me

Go

A NOVEL

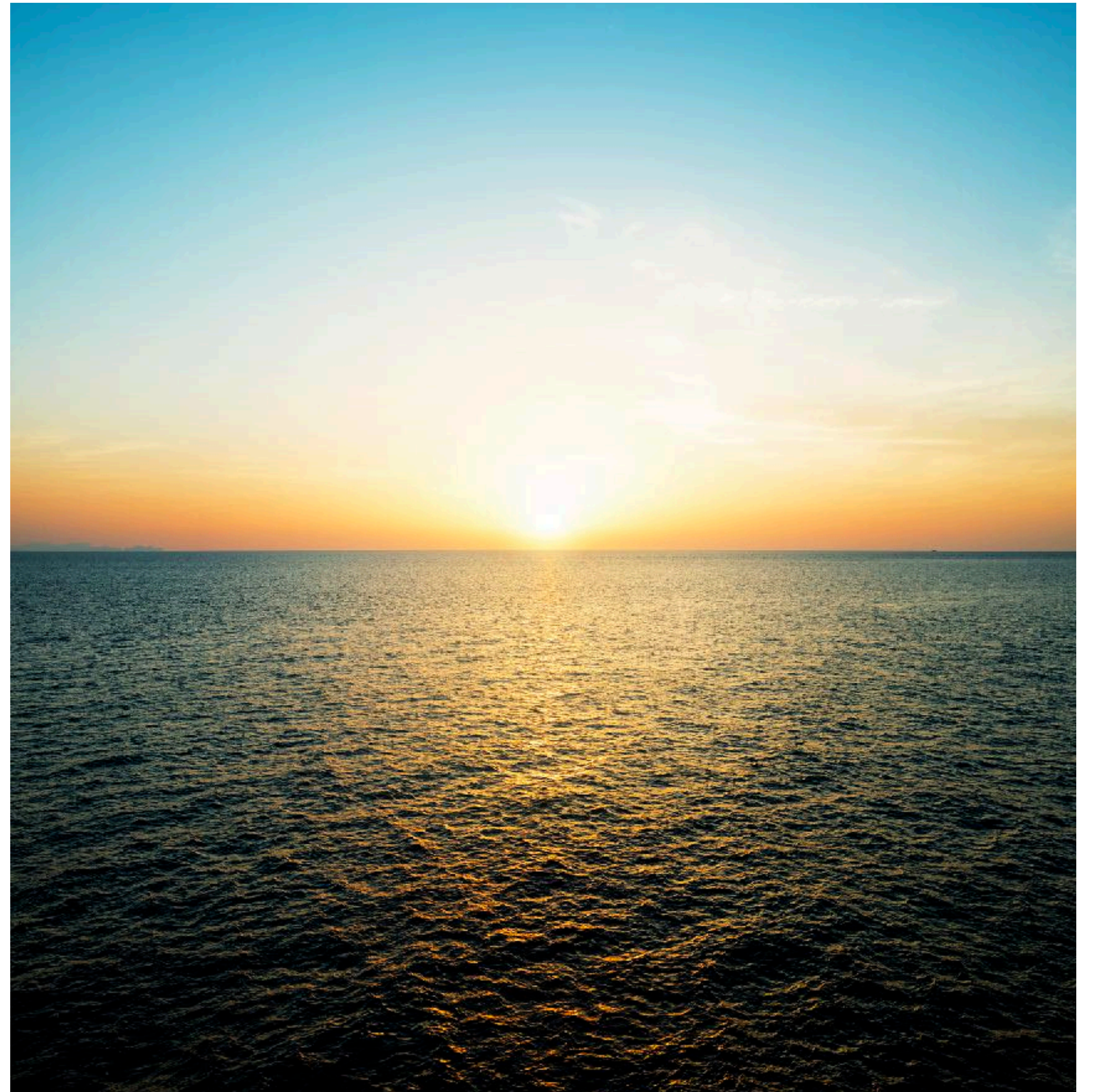


Kazuo Ishiguro

Reader-Response

literary criticism

“reader-response criticism considers readers' reactions to literature as vital to interpreting the meaning of the text. However, reader-response criticism can take a number of different approaches. A critic deploying reader-response theory can use a psychoanalytic lens, a feminist lens, or even a structuralist lens. What these different lenses have in common when using a reader-response approach is they maintain "...that what a text is cannot be separated from what it does" (Tyson 154).” ([Source: Purdue Owl](#))



Activity 5

Reader response criticism

- You will take ten minutes to think and write down a small paragraph about how you experienced the ending of *Never Let Me Go*. Consider your feelings, how the language worked, the emotions it elicited, the questions it left you with.
- You will then spend 10 minutes in small groups sharing your texts.